

# HABITAT

YOUR HOLISTIC HAVEN

Welcome to Habitat, an extraordinary project that brings together a holistic wellness concept with an unparalleled range of activities plus exciting business opportunities.

One of the most remarkable aspects of Habitat is its unmatched array of facilities, carefully composed to satisfy all your necessities. Various shopping facilities ensure that you get everything you need for your daily essentials.

With a strong focus on both, physical and mental well-being, Habitat offers all around holistic health, from the rainbow concept restaurant with food from its own cultivation to the diverse sports and wellness possibilities to the health centre with anti-ageing offers and professional medical care.

Indulge in a diverse social life through a diverse range of activities. Unwind and socialize at the cinema or at the sports bar, Habitat offers a multitude of amenities for your perfect lifestyle.

Families will find solace in the dedicated kids play area, designed to provide a safe and enjoyable space for children to explore and play. Even our furry friends can revel in the park area, specially created for dogs to have their share of fun.

Experience the best of convenience, recreation, and family-friendly amenities at Habitat, where every aspect of your lifestyle has been carefully considered.



# Project Overview

Total land area: 267.600 m<sup>2</sup>

Green area: 200.000 m<sup>2</sup>

Units: 1.407

Elevation:

Front of the project: 38m above sea level

Commercial zone: 44m above sea level

Middle of the project: 62m above sea level

Highest point: 90m above sea level



The visionary holistic concept combines modern life, wellness, activities and business

Discover all you need at the 11.000 m<sup>2</sup> Commercial area

Explore the Habitat Boulevard: 1.4 km landscaped road, surrounded by cascading waterfalls

Come across the Car road, bicycle road and jogging road, separated by trees (total length: 3.5 km)

Enjoy the unparalleled range of facilities

# Facilities



Spa



Wellness



Sauna



Steam Room



Health Center



Anti Ageing  
Center



Gym



Tennis Court



Bike Rental



Hiking Path



Pool



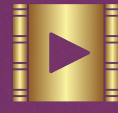
Aquapark



Yoga & Thai Chi  
Lounges



Playground



Cinema



Restaurant



Bar



Bakery



Cafeteria



Pet Friendly



Shops



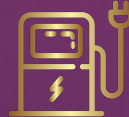
Supermarket



Pharmacy



Car Rental



Electric Car  
Charging



Shuttle Service



Concierge Service



Onsite  
Management



ATM



Laundry

# Location



250 meters to the sea



Kyrenia: 37 mins  
Famagusta: 39 mins  
Iskele: 31 mins



Ercan Airport: 45 mins  
Larnaca Airport: 1 hour  
Paphos Airport: 2 hour 20 mins



Commercial

Facilities Center

Bungalows

D-Block

- 2 Bedroom Garden
- 2 Bedroom Garden Corner
- 3 Bedroom Penthouse Duplex

C-Block

- 2 Bedroom Garden Corner
- 3 Bedroom Penthouse Duplex

E-Block

- 1 Bedroom Garden
- 1 Bedroom Garden Corner
- 1 Bedroom Penthouse Duplex
- 2 Bedroom Penthouse Duplex

F-Block

- Studio Garden
- 1 Bedroom Garden
- 1 Bedroom Penthouse Duplex

# F-Block

## Studio Garden



43 m<sup>2</sup> covered area  
6 m<sup>2</sup> balcony  
49 m<sup>2</sup> total living space

## 1 Bedroom Garden



67 m<sup>2</sup> covered area  
12 m<sup>2</sup> balcony  
9 m<sup>2</sup> total living space





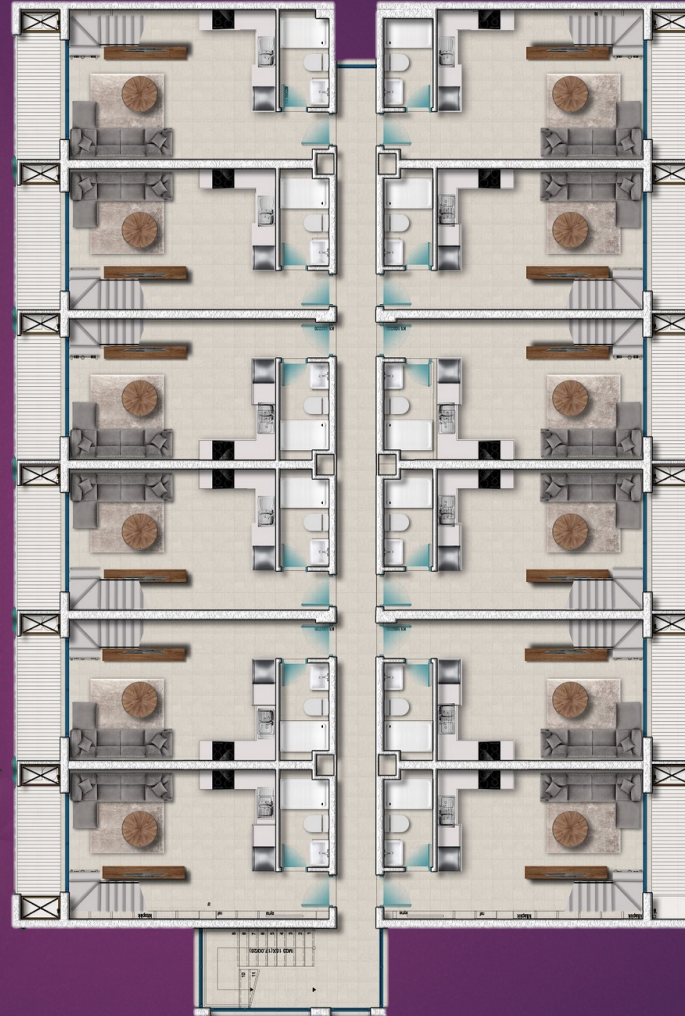
# F-Block

## 1 Bedroom Duplex Penthouse

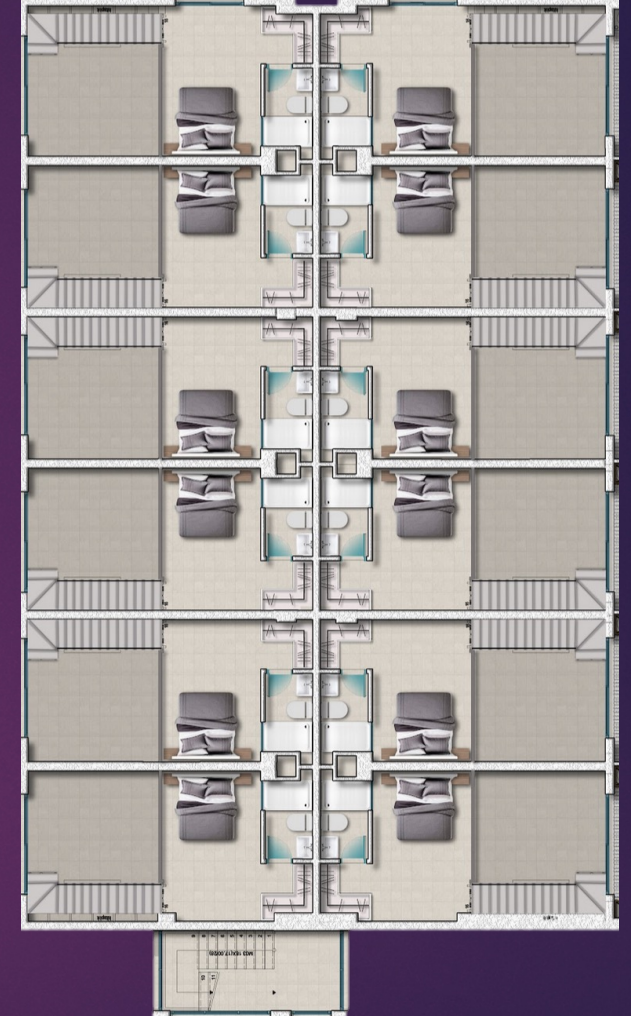


60 m<sup>2</sup> covered area | 6 m<sup>2</sup> balcony  
36 m<sup>2</sup> roof terrace | 96 m<sup>2</sup> total living space

1+1 (First floor)



1+1 (Gallery floor)



# C-Block

2 Bedroom Garden



82 m<sup>2</sup> covered area | 18 m<sup>2</sup> terrace  
100 m<sup>2</sup> total living space

2+1 Groundfloor



# C-Block

## 3 Bedroom Duplex Penthouse



105 m<sup>2</sup> covered area | 15 m<sup>2</sup> balcony  
65 m<sup>2</sup> roof terrace | 185 m<sup>2</sup>

3+1 (Second Floor)



3+1 (Gallery Floor)



All Pre-Planning Information provided in this document is subject to change and developer has the right to make any alterations / cancellations at the planning phase.

# D-Block

## 3 Bedroom Duplex Penthouse



105 m<sup>2</sup> covered area | 15 m<sup>2</sup> balcony  
65 m<sup>2</sup> roof terrace | 185 m<sup>2</sup>

3+1 First Floor



3+1 Gallery floor



# Bungalows

## 3 Bedroom Bungalow



125 m<sup>2</sup> covered area | 50 m<sup>2</sup> garden terrace  
120 m<sup>2</sup> roof terrace | 295 m<sup>2</sup> total living space

Bungalow Ground Floor



Bungalow Roof Terrace





# Starting Prices

## Studio Garden

£ 99.000

43 m<sup>2</sup> closed area | 6 m<sup>2</sup> balcony  
49 m<sup>2</sup> total living space

## 1+1 Garden

£ 139.000

50 m<sup>2</sup> closed area | 10 m<sup>2</sup> balcony  
60 m<sup>2</sup> total living space

## 1+1 Duplex Penthouse

£ 155.000

60 m<sup>2</sup> closed area | 6 m<sup>2</sup> balcony  
36 m<sup>2</sup> roof terrace | 96 m<sup>2</sup> total living space

## 2+1 Garden

£ 250.000

82 m<sup>2</sup> closed area | 18 m<sup>2</sup> terrace  
100 m<sup>2</sup> total living space



## Starting Prices

### 2+1 Duplex Penthouse

£ 259.000

100 m<sup>2</sup> closed area | 8 m<sup>2</sup> terrace  
36 m<sup>2</sup> roof terrace | 144 m<sup>2</sup> total living space

### 3+1 Duplex Penthouse

£ 315.000

105 m<sup>2</sup> closed area | 15 m<sup>2</sup> balcony  
65 m<sup>2</sup> roof terrace | 185 m<sup>2</sup> total living space

### 3+1 Bungalow

£ 430.000

125 m<sup>2</sup> covered area | 50 m<sup>2</sup> garden terrace  
120 m<sup>2</sup> roof terrace | 295 m<sup>2</sup> total living space



## Payment Plan

### Presale Phase:

30% Down Payment

6 months break

10% Payment

6 months break

10% Payment

The balance of 50%

3 years no interest payment plan

Total 48 months



# HABITAT

YOUR HOLISTIC HAVEN